

DESCRIPTION

The MX2319 uses advanced trench technology to provide excellent $R_{DS(ON)}$ and low gate charge. It can be used in a wide variety of applications.

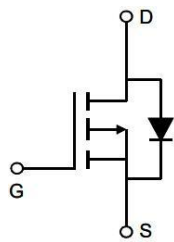
GENERAL FEATURES

- $V_{DS}=-18V$, $I_D=-7A$
 $R_{DS(ON)}(Typ.)=22m\Omega$ @ $V_{GS}=-2.5V$
 $R_{DS(ON)}(Typ.)=17m\Omega$ @ $V_{GS}=-4.5V$
- High Power and current handling capability
- Lead free product is acquired
- Surface Mount Package

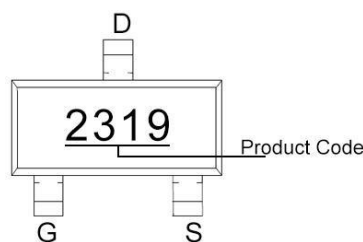
APPLICATION

- PWM applications
- Load switch
- Power management

PINOUT



Schematic diagram



Marking and Pin Assignment



SOT23-3L top view

ORDERING INFORMATION

Part Number	Marking	Storage Temperature	Package	Devices Per Reel
MX2319	2319	-55°C to 150°C	SOT23-3L	3000

ABSOLUTE MAXIMUM RATINGS ($T_A=25^\circ C$ unless otherwise noted)

Parameter	Symbol	Limit	Unit
Drain-Source Voltage	V_{DS}	-18	V
Gate-Source Voltage	V_{GS}	± 12	V
Drain Current-Continuous	I_D	-7	A
Drain Current-Pulsed ^(Note1)	I_{DM}	-24	A
Maximum Power Dissipation	P_D	1.5	W
Operating Junction Temperature Range	T_J	-55 to 150	°C

THERMAL CHARACTERISTIC

Thermal Resistance, Junction-to-Ambient ^(Note 2)	$R_{\theta JA}$	83	°C/W
---	-----------------	----	------

Note 1. Repetitive Rating: Pulse width limited by maximum junction temperature.

Note 2. Surface Mounted on FR4 Board, $t \leq 10$ sec.



ELECTRICAL CHARACTERISTICS ($T_A=25^\circ\text{C}$ unless otherwise noted)

Parameter	Symbol	Conditions	Min	Typ	Max	Unit
-----------	--------	------------	-----	-----	-----	------

Off Characteristics

Drain-Source Breakdown Voltage	BV_{DSS}	$V_{GS}=0V, I_D=-250\mu A$	-18	-20	-	V
Zero Gate Voltage Drain Current	I_{DSS}	$V_{DS}=-18V, V_{GS}=0V$	-	-	-1	μA
Gate-Body Leakage Current	I_{GSS}	$V_{GS}=\pm 12V, V_{DS}=0V$	-	-	± 100	nA

On Characteristics (Note3)

Gate Threshold Voltage	$V_{GS(th)}$	$V_{DS}=V_{GS}, I_D=-250\mu A$	-0.45	-0.7	-1.2	V
Drain-Source On-State Resistance	$R_{DS(ON)}$	$V_{GS}=-2.5V, I_D=-4.5A$	-	22	28	$m\Omega$
		$V_{GS}=-4.5V, I_D=-5A$	-	17	21	$m\Omega$
Forward Transconductance	g_{FS}	$V_{DS}=-5V, I_D=-6A$	-	33	-	S

Dynamic Characteristics (Note4)

Input Capacitance	C_{iss}	$V_{DS}=-10V, V_{GS}=0V, F=1.0MHz$	-	1720	-	pF
Output Capacitance	C_{oss}		-	260	-	pF
Reverse Transfer Capacitance	C_{rss}		-	230	-	pF

Switching Characteristics (Note4)

Turn-on Delay Time	$t_{d(on)}$	$V_{DS}=-10V, I_D=1A, R_L=1\Omega, V_{GS}=-4.5V, R_G=3\Omega$	-	11	-	nS
Turn-on Rise Time	t_r		-	25	-	nS
Turn-Off Delay Time	$t_{d(off)}$		-	70	-	nS
Turn-Off Fall Time	t_f		-	42	-	nS
Total Gate Charge	Q_g	$V_{DS}=-10V, I_D=-7A, V_{GS}=-4.5V$	-	13	-	nC
Gate-Source Charge	Q_{gs}		-	2	-	nC
Gate-Drain Charge	Q_{gd}		-	3	-	nC

Drain-Source Diode Characteristics

Diode Forward Voltage (Note3)	V_{SD}	$V_{GS}=0V, I_S=-1A$	-	-	-1.2	V
Diode Forward Current (Note2)	I_S		-	-	-3	A

Note 2. Surface Mounted on FR4 Board, $t \leq 10$ sec.

Note 3. Pulse Test: Pulse Width $\leq 300\mu s$, Duty Cycle $\leq 2\%$.

Note 4. Guaranteed by design, not subject to production

TYPICAL ELECTRICAL AND THERMAL CHARACTERISTICS

Figure 1. Switching Test Circuit

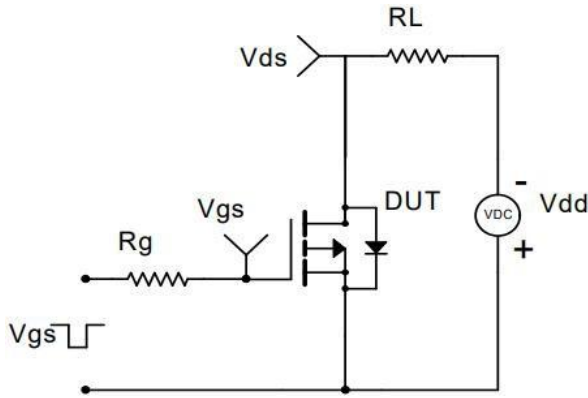


Figure 2. Switching Waveform

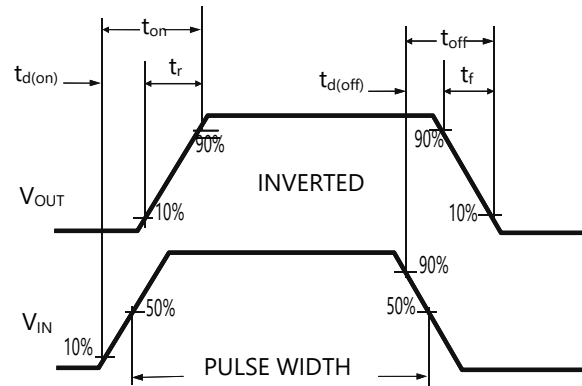


Figure 3. Power De-rating

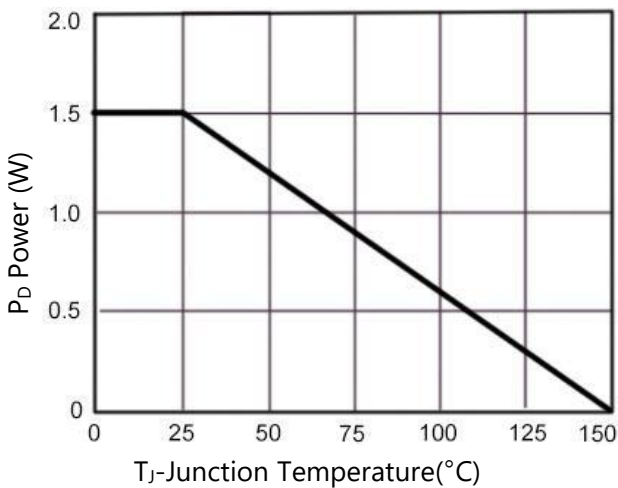


Figure 4. Drain Current

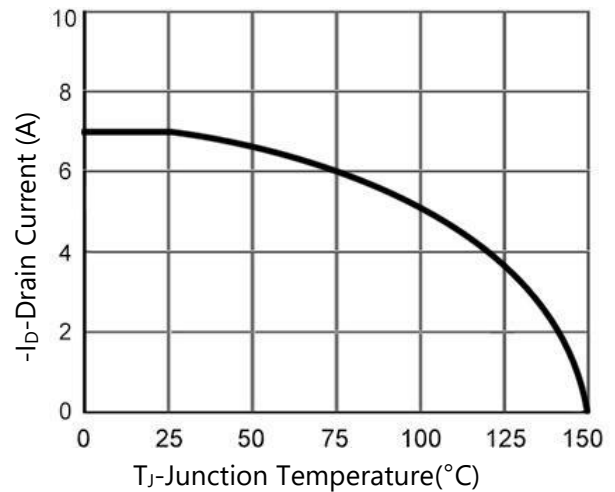


Figure 5. Output Characteristics

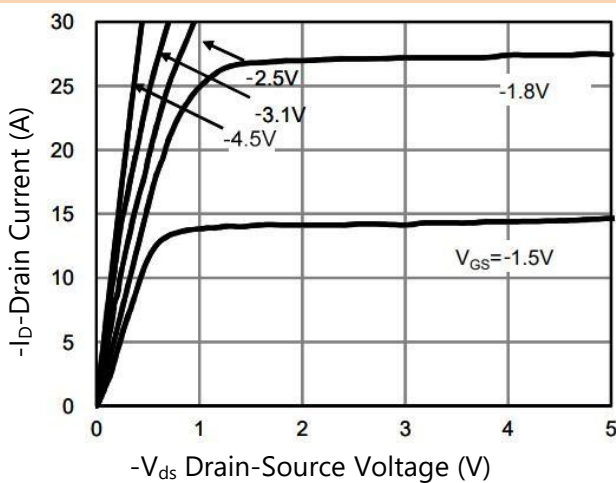
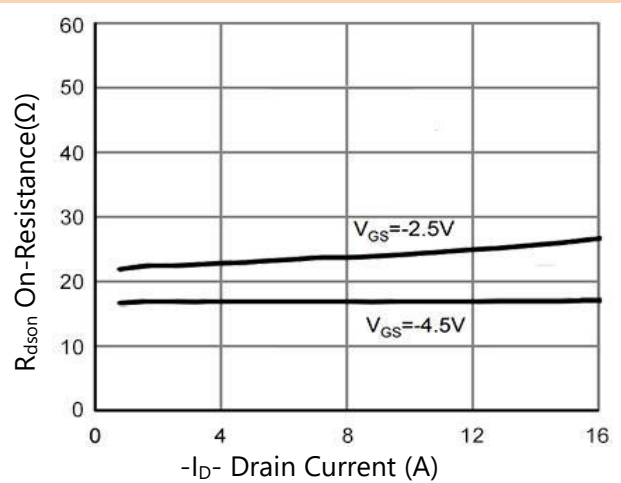


Figure 6. R_{ds(on)} vs Drain Current





TYPICAL ELECTRICAL AND THERMAL CHARACTERISTICS

Figure 7. Transfer Characteristics

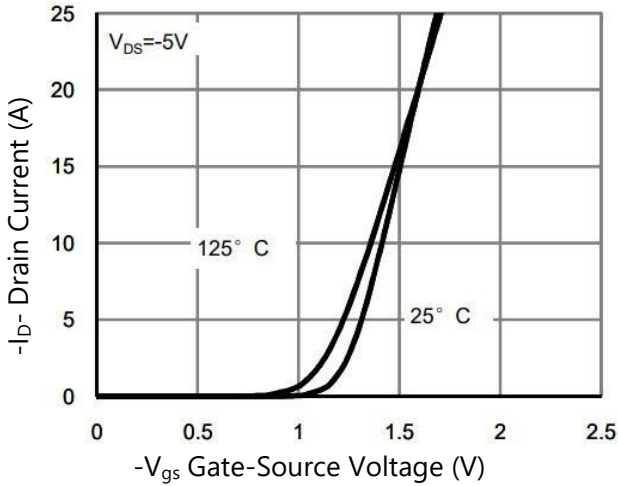


Figure 8. R_{ds(on)} vs Junction Temperature

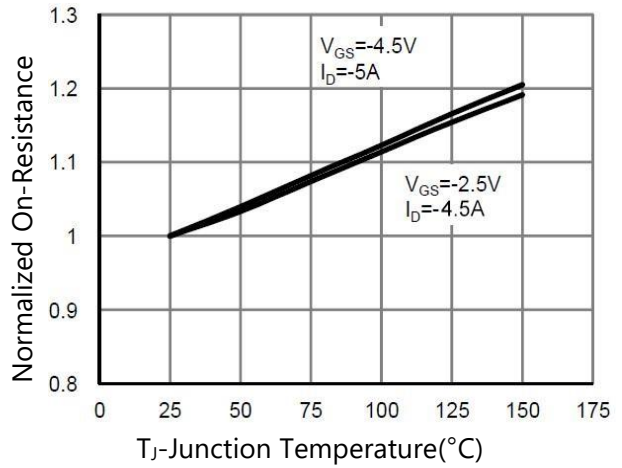


Figure 9. R_{ds(on)} vs V_{gs}

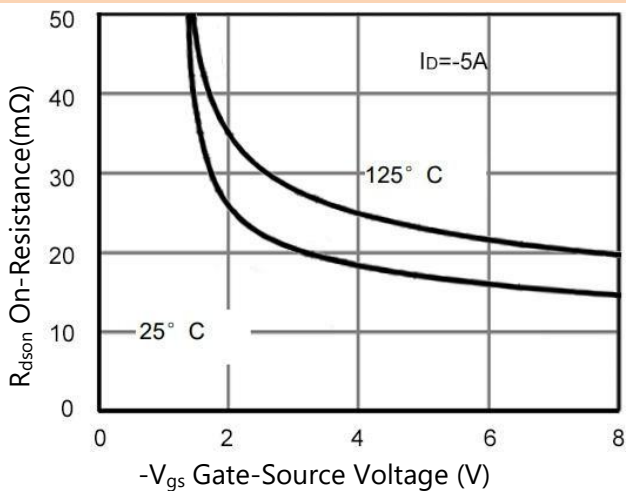


Figure 10. Capacitance vs V_{ds}

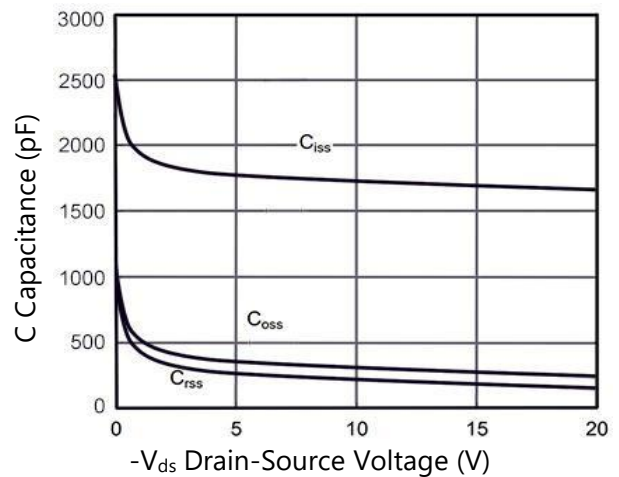


Figure 11. Gate Charge

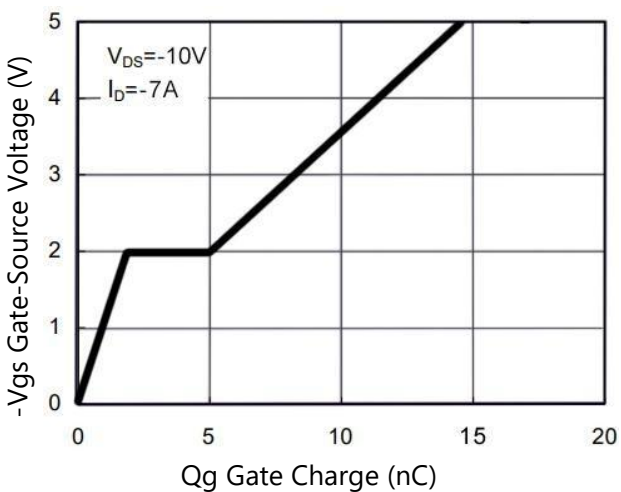
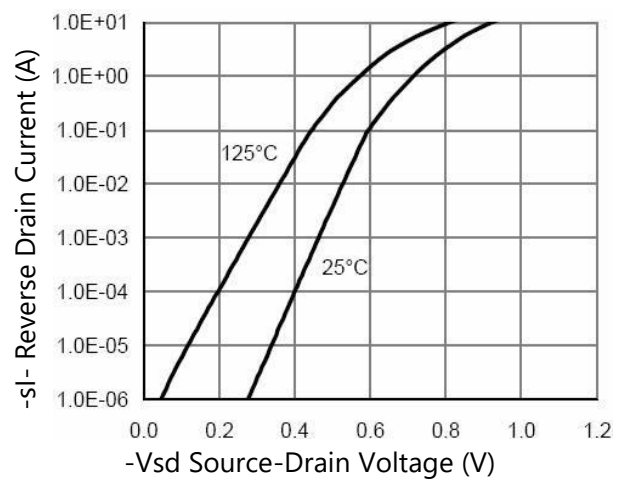


Figure 12. Source- Drain Diode Forward



TYPICAL ELECTRICAL AND THERMAL CHARACTERISTICS

Figure 13. Safe Operation Area

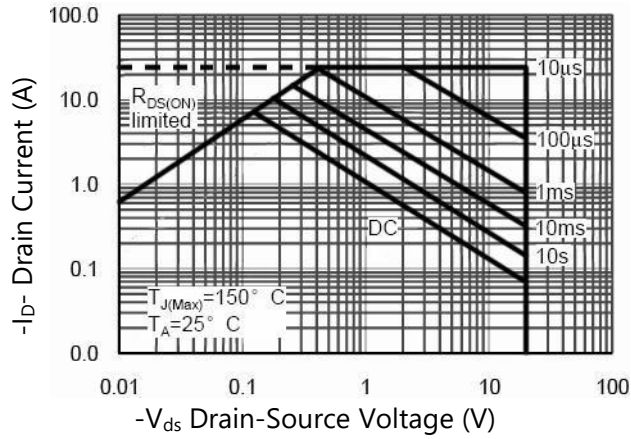
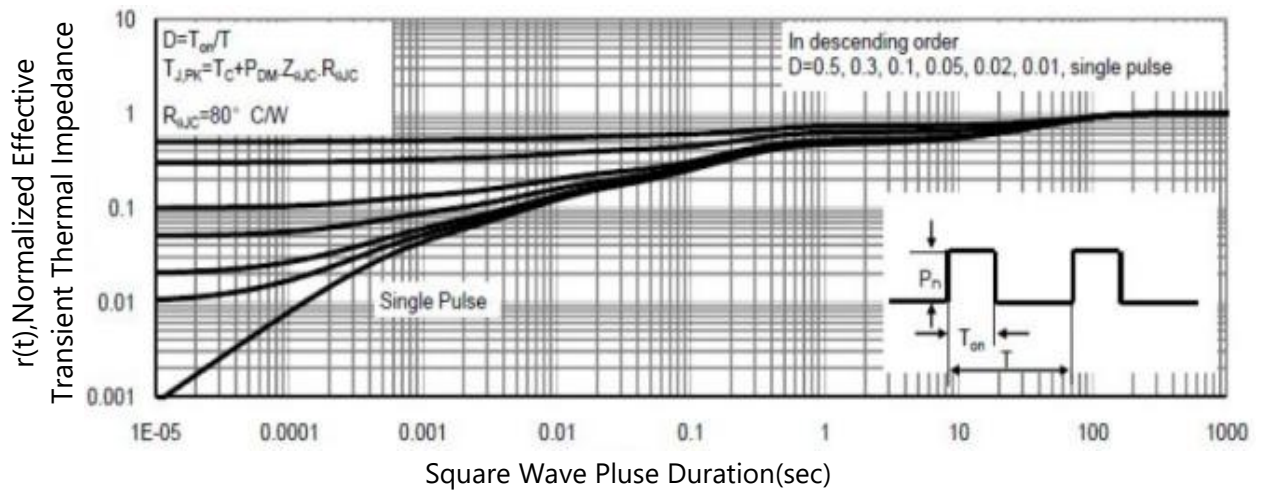
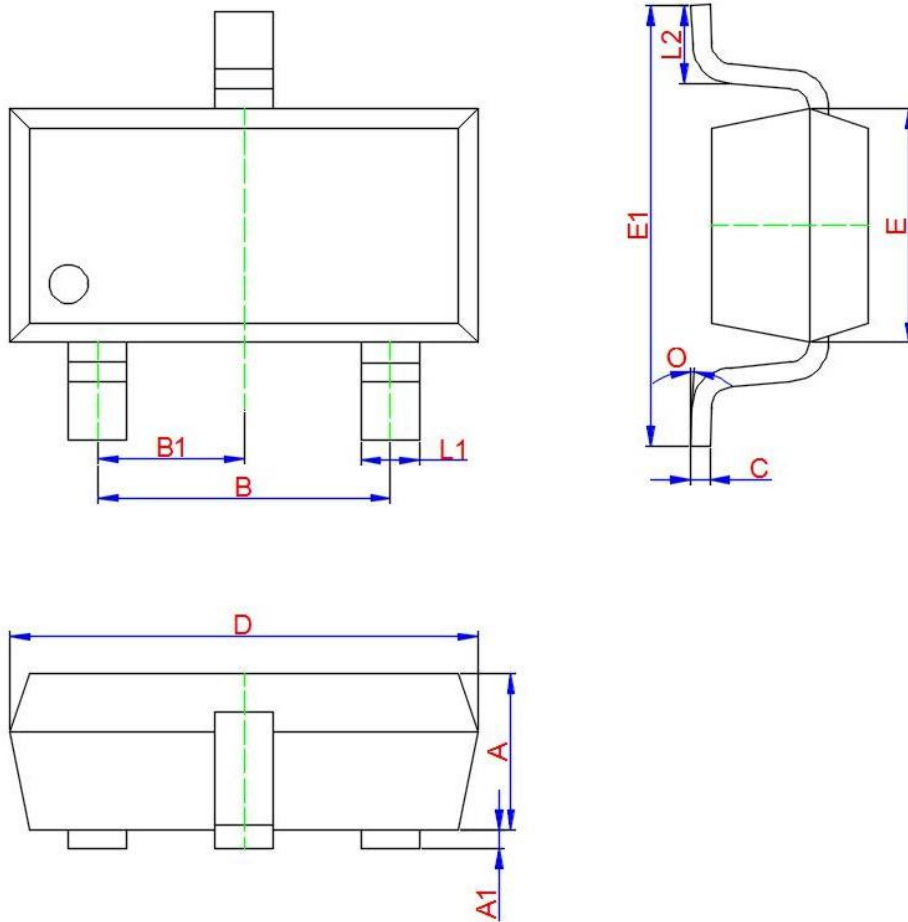


Figure 14. Normalized Maximum Transient Thermal Impedance



PACKAGE INFORMATION

SOT23-3L



Symbol	Dimensions In Millimeters		
	Min.	Typ.	Max.
A	1.050	1.100	1.150
A1	0.000	0.050	0.100
L1	0.300	0.400	0.500
D	0.100	0.150	0.200
D	2.820	2.920	3.020
E	1.500	1.600	1.700
E1	2.650	2.800	2.950
B	1.800	1.900	2.000
B1	0.950 TYP.		
L2	0.300	0.450	0.600
O	0°	4°	8°